



Make It Yours.

SICKLEFLOW 120 ARGB REVERSE EDITION

MFX-B2DR-18NPA-R1

FLOW TO PRESSURE



FEATURES

Reverse Fan Blade – Coverless dual fans for brighter lighting and enhanced for increased bottom up air flow. Increased fan blades and accentuated curves optimize air flow and pressure.

Improved Frame Durability - Reinforced square frame structure with added rib-support minimizes turbulent flow and noise for boosted efficiency.

New Bearing Sealant – Two-tier sealing design improves dustproof capabilities and prevent lubricant oil leakage for extended life span and performance.

Luminescent Light Effect – Frosted white fan blades enhance light dispersion for a more vibrant and radiant lighting effect.

Certified Compatible - Certified compatibility with Asus Aura, ASRock RGB, and MSI RGB Motherboards. (Both ARGB and RGB version)

Optimized Flow and Pressure

Following the SickleFlow 120 series, Cooler Master is introducing several new models upgraded with all new performance enhancements. The Addressable RGB lighting is even more vibrant with certified compatibility across all major motherboard manufacturers.

The SickleFlow 120 Reverse Edition now feature larger fan blades with accentuated curves for optimal air flow and air pressure. The frame design is reinforced with added rib housing for exceptional durability and enhanced dust proof and leak proofing for extended life expectancy,

SPECIFICATIONS

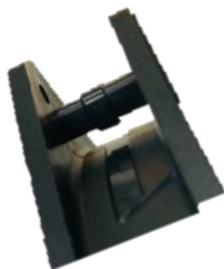
Product Name	SickleFlow 120 ARGB Reverse Edition
Product Number	MFX-B2DR-18NPA-R1
Profile	Addressable RGB
Bearing Type	Rifle
Fan Speed (RPM)	650~1800 RPM ± 5%
Airflow (CFM)	62 CFM (Max)
Air Pressure (mmH ₂ O)	2.5 mmH ₂ O (Max)
Fan Noise Level (dBA)	8~27 dBA
Dimensions (mm)	120 x 120 x 25 (4.7 x 4.7 x 1")
MTTF (hours)	160,000
RGB Connector	3-Pin ARGB
RGB Rated Voltage	5 VDC
RGB Rated Current	0.21 A
Rated Voltage	12 VDC
Rated Current	0.15 A
Safety Current	0.37A
Power Consumption	1.8 W
Connector	4-Pin PWM
Weight	163 g (0.36 lbs)
Warranty	2 Years

PACKING INFORMATION

EAN code	4719512109830
UPC code	884102082146
Net weight	0.165
Gross weight	0.230
Package dimension (L x W x H)	143 x 32 x 228 mm
Carton dimension (L x W x H)	420 x 375 x 173 mm
Units/CTN	20

Cont.	W/ Pallet	Carton/ Pallet	W/O Pallet
20'	15840	72	N/A
40'	31680	72	N/A
40 HQ	34320	78	N/A

FEATURES



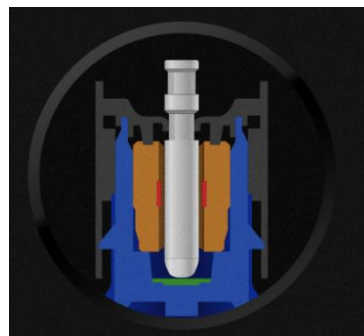
Improved Structural Support

New Flange housing design with added rib for better support and reduced vibration



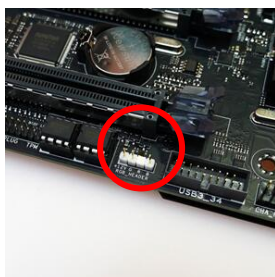
Reverse Fan Blades

Coverless dual fans for brighter lighting and increased air flow.



Two-Tier Sealing Mechanism

Improve dustproof properties and sleeve lubricant leak prevention.



Motherboard/Controller (Needed)

Requires Motherboard ARGB port or ARGB controller (sold separately).